



Bishops Rise, Hatfield, AL10 9HQ

House - Mid Terrace | 4 Bedrooms


£1,800 Per Calendar Month

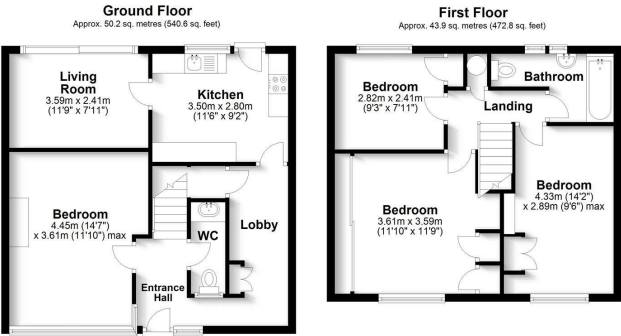
**LARKHAM  
PIKE** &

[www.larkhamandpike.co.uk](http://www.larkhamandpike.co.uk)





Energy Efficiency Rating		
	Current	Potential
<i>Very energy efficient - lower running costs</i>		
(92 plus) <b>A</b>	<b>67</b>	<b>85</b>
(81-91) <b>B</b>		
(69-80) <b>C</b>		
(55-68) <b>D</b>		
(39-54) <b>E</b>		
(21-38) <b>F</b>		
(1-20) <b>G</b>		
<i>Not energy efficient - higher running costs</i>		
England & Wales		EU Directive 2002/91/EC
		



Total area: approx. 94.2 sq. metres (1013.5 sq. feet)  
For identification purposes only. Not to scale.  
Plan produced using PlanUp.